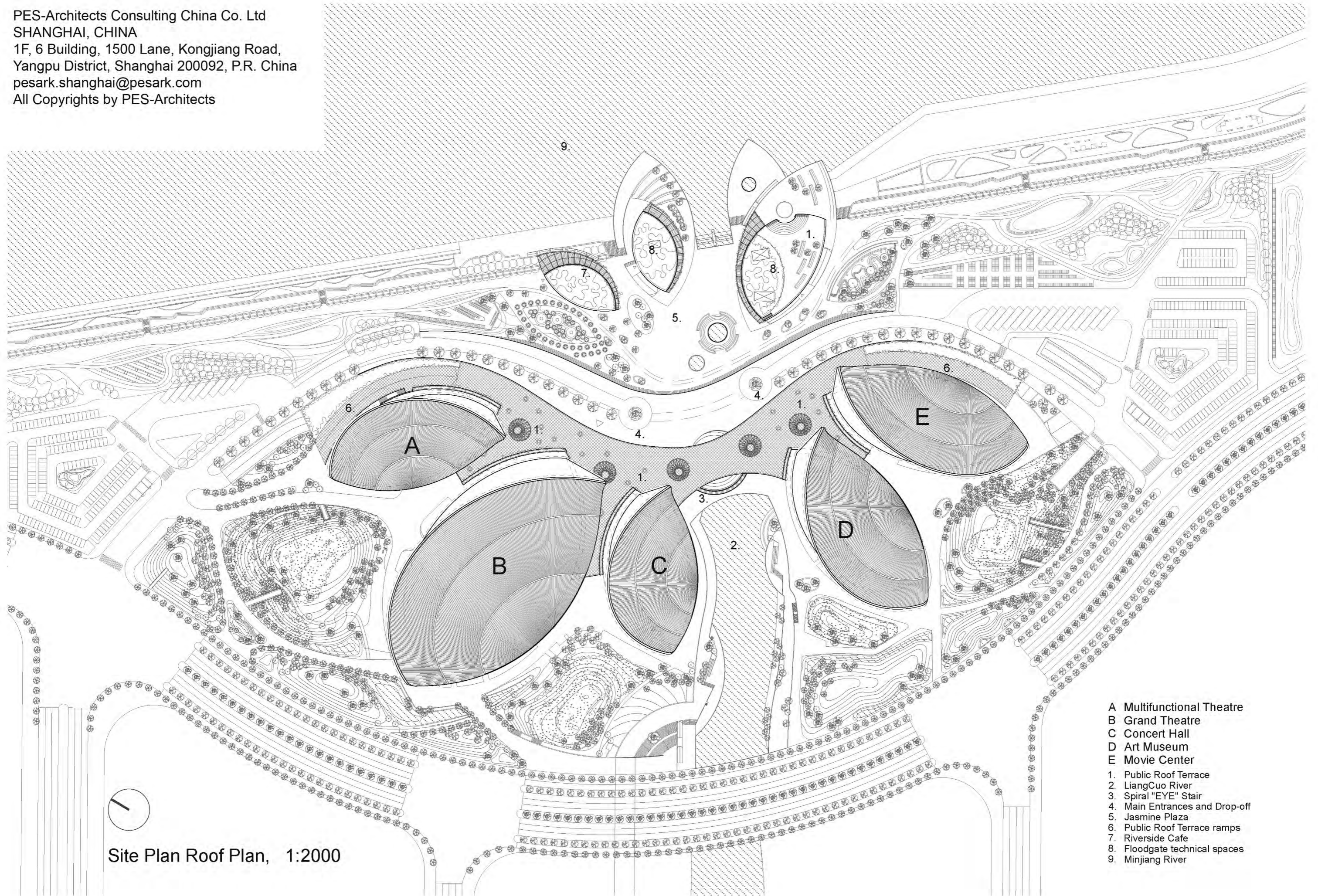


PES-Architects Consulting China Co. Ltd
SHANGHAI, CHINA
1F, 6 Building, 1500 Lane, Kongjiang Road,
Yangpu District, Shanghai 200092, P.R. China
pesark.shanghai@pesark.com
All Copyrights by PES-Architects



Site Plan Roof Plan, 1:2000

- A Multifunctional Theatre
- B Grand Theatre
- C Concert Hall
- D Art Museum
- E Movie Center
- 1. Public Roof Terrace
- 2. LiangCuo River
- 3. Spiral "EYE" Stair
- 4. Main Entrances and Drop-off
- 5. Jasmine Plaza
- 6. Public Roof Terrace ramps
- 7. Riverside Cafe
- 8. Floodgate technical spaces
- 9. Minjiang River